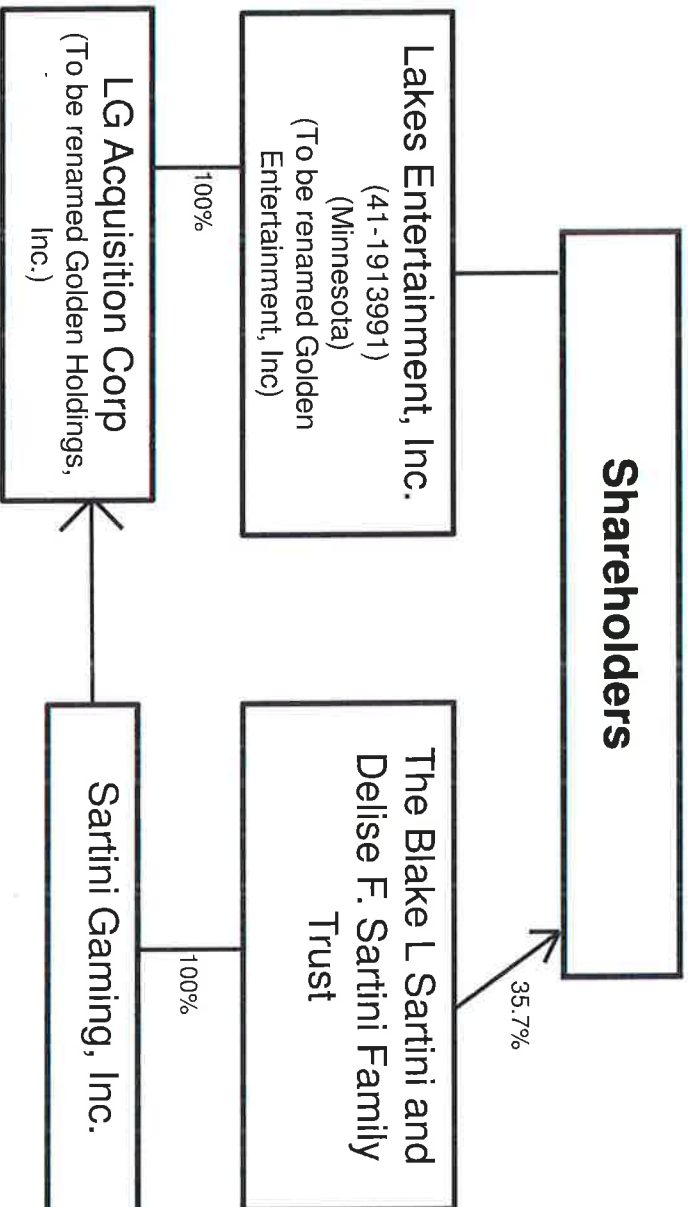
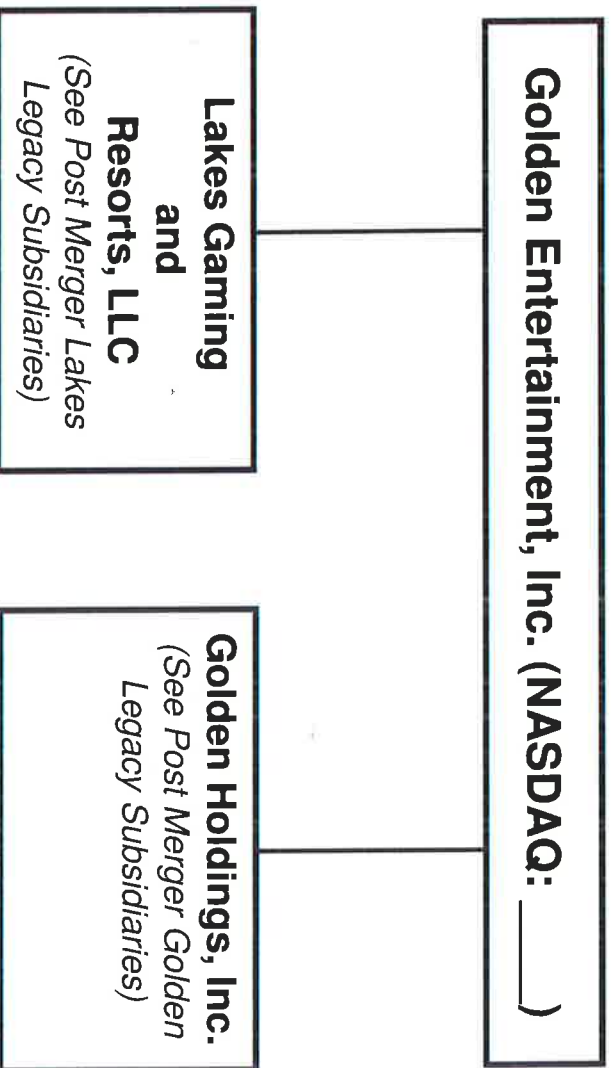


# MERGER OVERVIEW



As of February 3, 2015

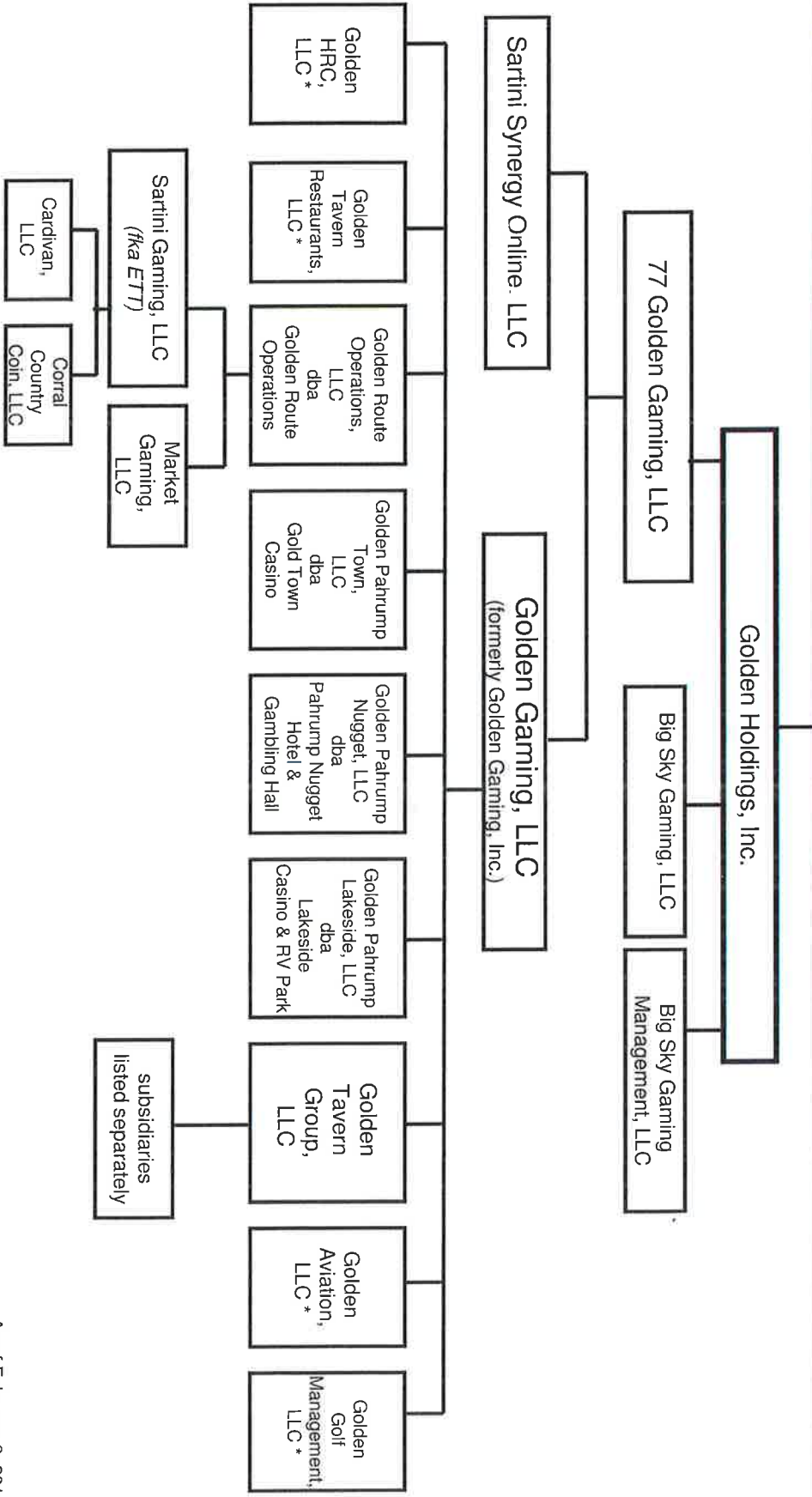
# POST MERGER ORGANIZATIONAL OVERVIEW



# Post Merger Golden Legacy Subsidiaries



**Golden Entertainment, Inc. (NASDAQ \_\_\_\_\_)**



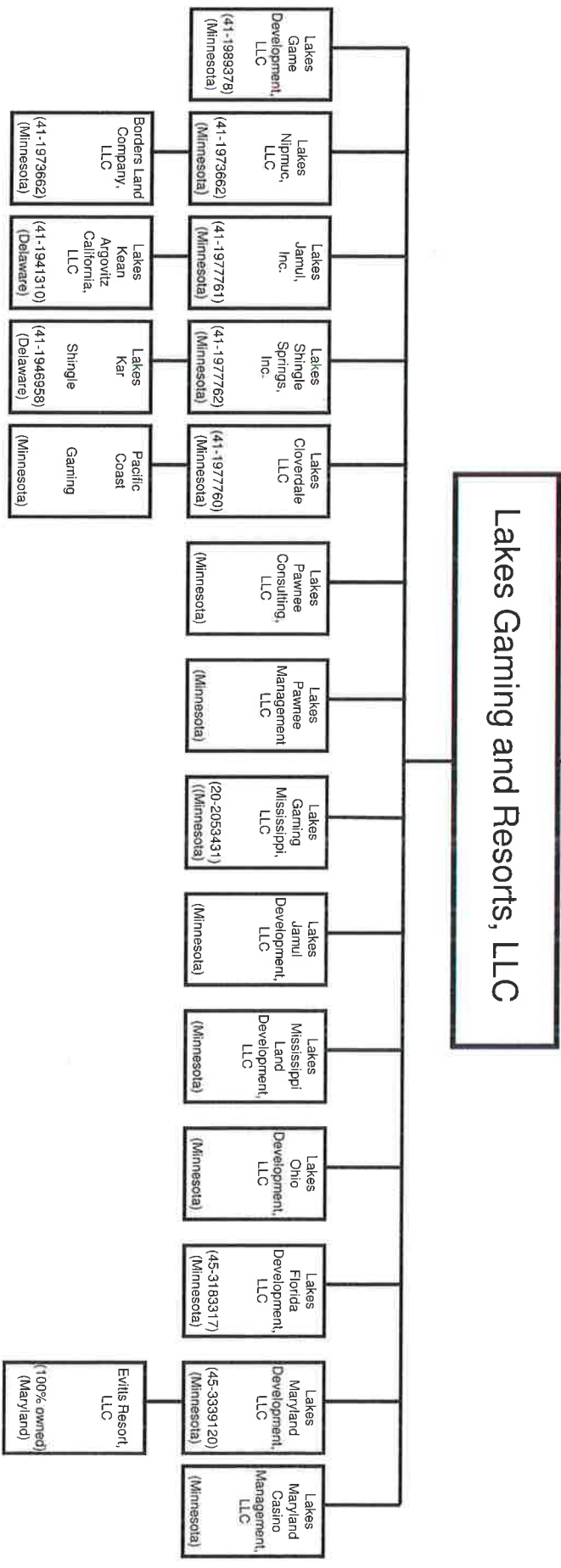
\* Entity still active with SOS but no longer has active operations.

As of February 3, 2015

# Post Merger Lakes Legacy Subsidiaries



**Golden Entertainment, Inc. (NASDAQ     )**



As of February 3, 2015